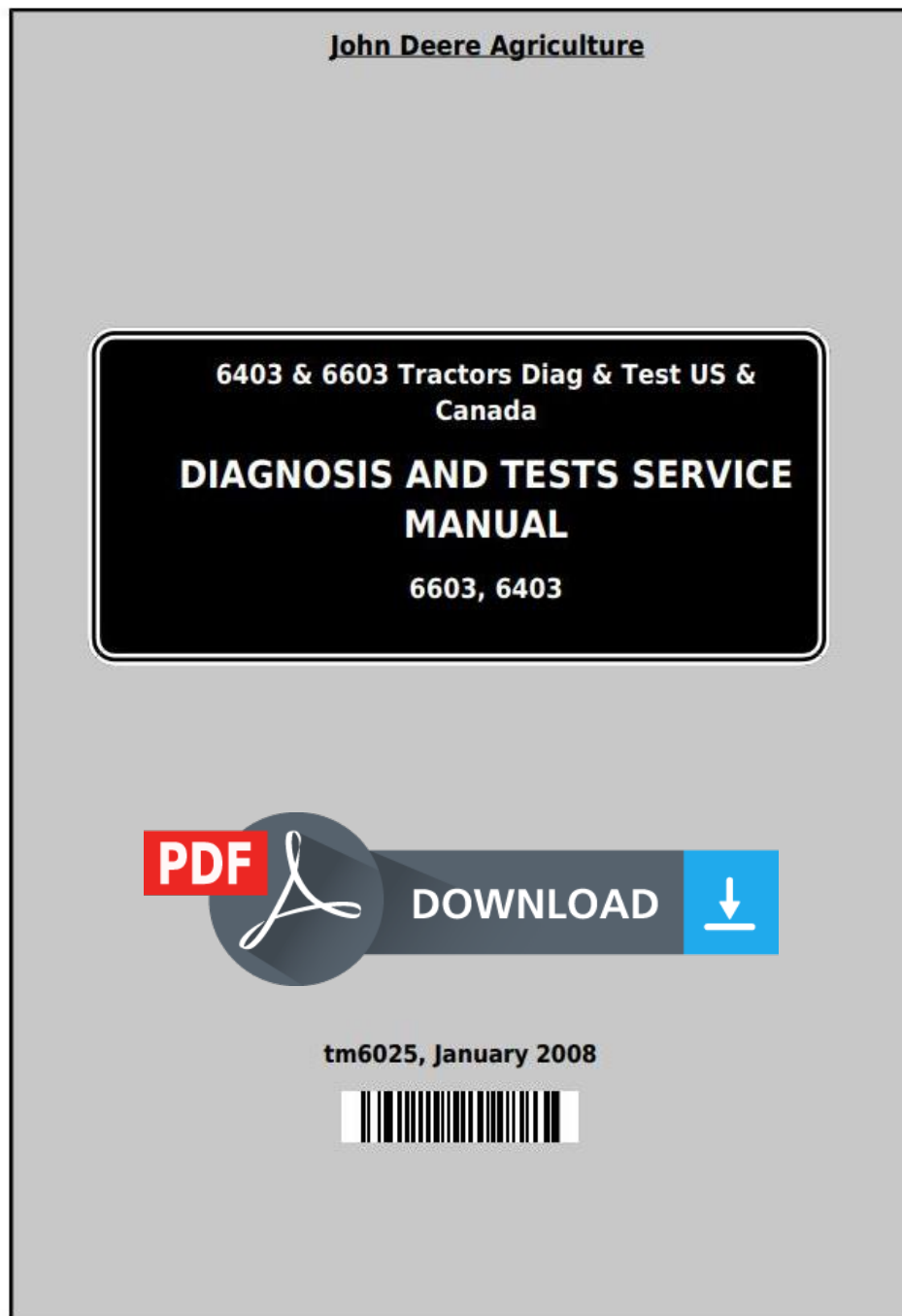


John Deere Tractors 6403, 6603 (North America) Diagnosis and Tests Service Manual (TM6025)



Covers: 6403,6603

Type: Service Manual

Language: English

Pages: 1139

Format: PDF

Features: Bookmarked, searchable, printable

Compatibility: Windows/Mac/Tablet/Mobile

This service manual contains important information for the maintenance, troubleshooting and servicing of the **John Deere Tractors 6403, 6603 (North America) Diagnosis and Tests Service Manual (TM6025)**

In this manual you will find detailed specifications, illustrations, schematics, diagrams and step-by-step procedures to properly service and diagnose the machine to the manufacturer's standards.

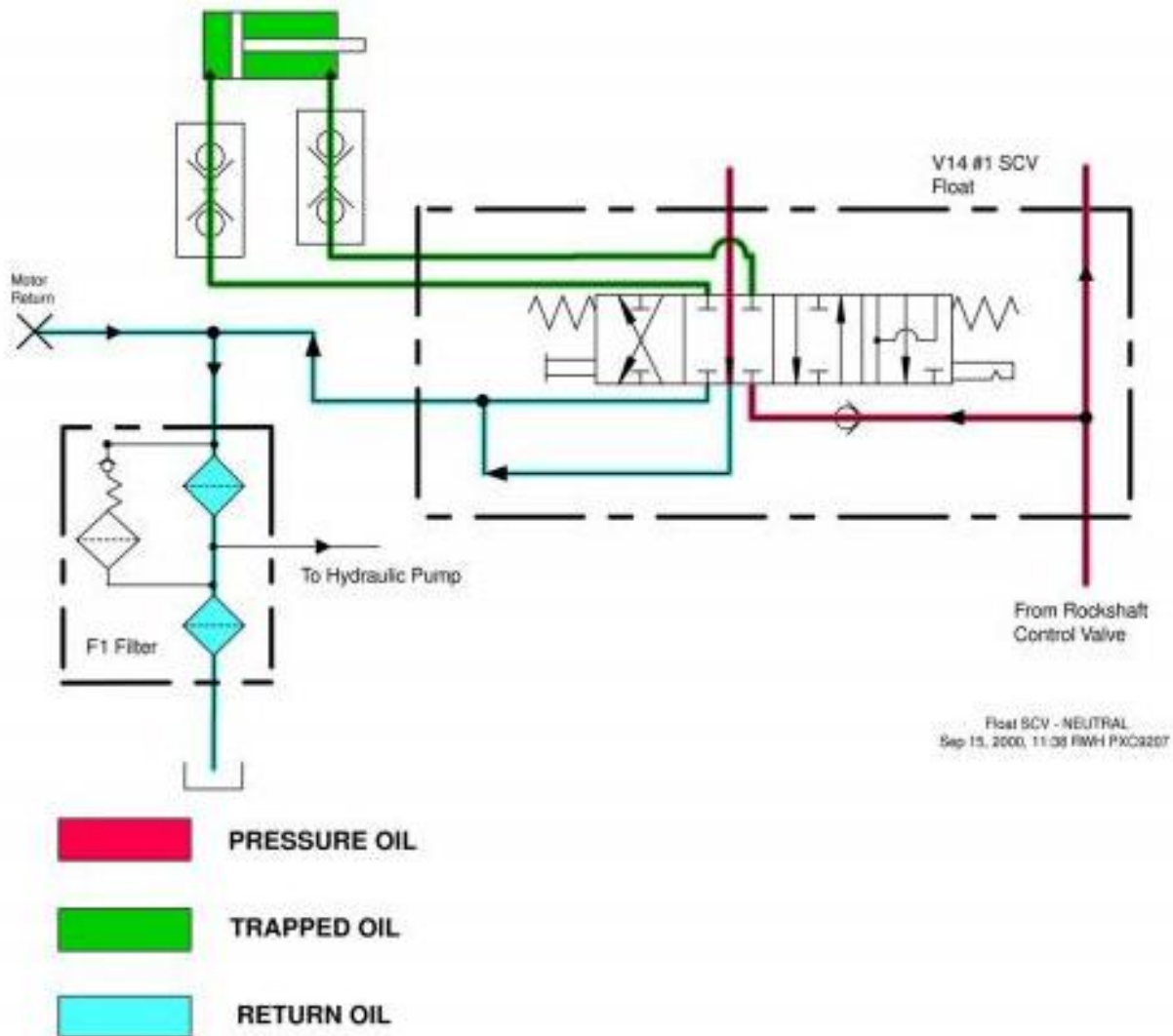
Contents:

- General Information
- Specifications
- Serial Number Location
- Engine Specifications
- Engine Diagnostics
- Engine Tests and Adjustments
- Engine Repair
- Power Train
- Transmission
- Axles
- Differential
- PTO
- Hydraulic System
- Electrical System
- Electrical Tests and Diagnostics
- Wiring Diagram / Schematic
- Ignition and Charging
- Steering
- Brakes
- Wheels
- Operator's Platform
- Body Panels
- Disassembly and Assembly
- Diagnostics, Tests and Adjustments
- Troubleshooting
- and much more...

Please note this manual is in **downloadable PDF format only**. If you have any questions about this product or would like to request sample pages, please contact us and reference the product name or SKU.

Ref. 270-15C-003 Detailed Description

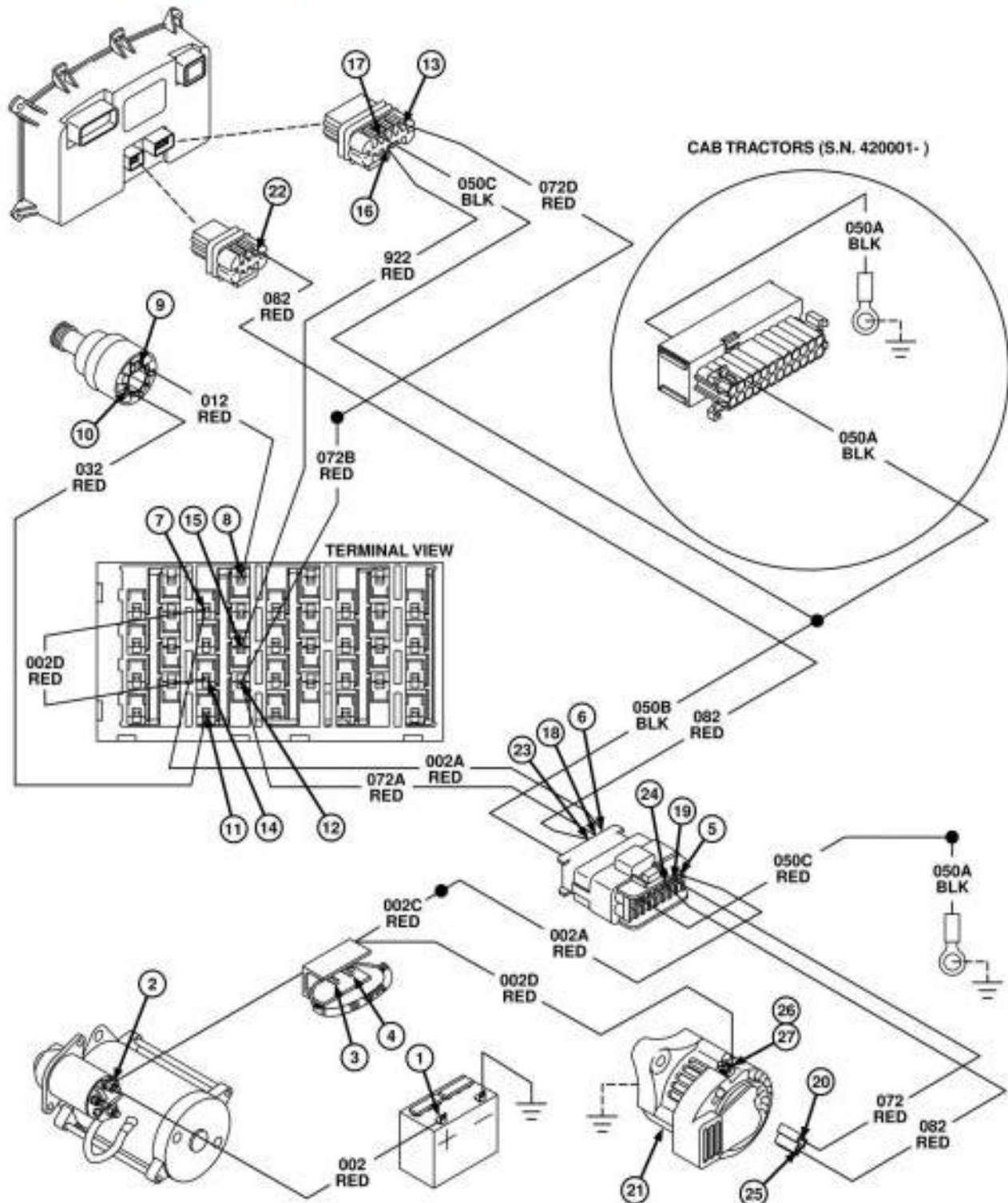
SCV #1 Operation



SCV #1 has neutral, extend, retract, and float positions. In neutral position low pressure oil flows through main galley supplying all SCV's and returns to sump. All work ports are closed and oil in extend and retract lines is trapped with load check being inactive.

SCV #1 Operation - Extend

Charging System Test Points



CHARGING SYSTEM TEST POINTS — ISOLATED OPEN OPERATOR STATION AND CAB TRACTORS

CONDITIONS:

- Gear shift lever in P, park position.
- PTO disengaged.



Thank you very much
for your reading.
Please click here
to get more information.