

328E and 332E Skid Steer Loaders

(PIN: 1T0328E__ _E236673—)

(PIN: 1T0332E__ _E236670—)

OPERATION & TEST TECHNICAL MANUAL

328E and 332E Skid Steer Loaders

TM12802 19MAR19 (ENGLISH)




**Worldwide Construction
And Forestry Division**
PRINTED IN U.S.A.

Introduction

Foreword

This manual is written for an experienced technician. Essential tools required in performing certain service work are identified in this manual and are recommended for use.

Live with safety: Read the safety messages in the introduction of this manual and the cautions presented throughout the text of the manual.

 This is the safety-alert symbol. When this symbol is seen on the machine or in this manual, be alert for the potential of personal injury.

Technical manuals are divided in two parts: repair and operation and tests. Repair sections tell how to repair the components. Operation and test sections help to quickly identify the majority of routine failures quickly.

Information is organized in groups for the various components requiring service instruction. At the beginning of each group are summary listings of all applicable essential tools, service equipment and tools, other materials needed to do the job, service parts kits, specifications, wear tolerances, and torque values.

Technical manuals are concise guides for specific machines. They are on-the-job guides containing only the vital information needed for diagnosis, analysis, testing, and repair.

Fundamental service information is available from other sources covering basic theory of operation, fundamentals of troubleshooting, general maintenance, and basic type of failures and their causes.

MM16284,00026ED -19-17SEP18-1/1

Manual Identification—READ THIS FIRST!

IMPORTANT: Use only supporting manuals designated for your specific machine. If incorrect manual is chosen, improper service may occur. Verify product identification number (PIN) when choosing the correct manual.

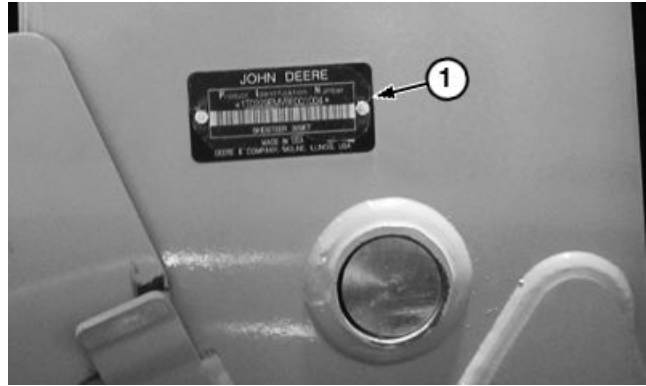
Choosing the Correct Supporting Manuals

John Deere skid steers are available in different machine configurations based on the various markets into which they are sold. Different supporting manuals exist for different machine configurations.

When necessary, product identification numbers are listed on the front covers of skid steers manuals. These numbers are used to identify the correct supporting manual for your machine.

Product Identification Number

The product identification number (PIN) plate (1) is located on the right side of machine above the boom lock. Each machine has a 17-character PIN (2) shown on PIN plate.



PIN Plate Location



Example of PIN Plate

1— PIN Plate

2— 17-Character PIN

TX1125798 —UN—13NOV12

TX1125843 —UN—20NOV12

The PIN identifies the producing factory, machine model number, machine option, year of manufacture, engine emission level, and machine serial number.

17-Character PIN Example																
(3)			(4)				(5)	(6)	(7)	(8)	(9)					
1	T	0	3	2	8	E	-	-	-	E	2	3	6	6	7	3
1	T	0	3	3	2	E	-	-	-	E	2	3	6	6	7	0

- **(3)—World Code**—Identifies location where machine is manufactured.
- **(4)—Machine Model Identifier**—Identifies model number.
- **(5)—Machine Option Code**—Identifies which major machine option is equipped. This character will change from one machine to another.
- **(6)—Check Letter**—This is a random character assigned by the factory. This is not used in machine identification.
- **(7)—Manufacturing Year Code**—Identifies year of machine manufacture.
- **(8)—Engine Emission Code**—Represents engine emission certification.
- **(9)—Machine Serial Number**—Identifies machine serial number. This character will change from one machine to another.

The following is an example for a 328E machine that meets Interim Tier 4 and Stage III B emission levels:

1T0328E__E236673

- 1T0** **World Code** (manufacturing location)
 - 1DW Davenport Works
 - 1T8 Thibodaux Works
 - 1T0 Dubuque Works
- 328E** **Machine Model Identifier**
- **Machine Option Code**
 - J Single Speed Electrohydraulic (EH)
 - K 2-Speed Electrohydraulic EH
 - L Single Speed High Flow Electrohydraulic (EH)
 - M 2-Speed High Flow Electrohydraulic (EH)
- **Check Letter** (variable)
- **Manufacturing Year Code** (variable)
 - C 2012
 - D 2013
 - E 2014
 - F 2015
 - G 2016
- E** **Engine Emission Code**
 - C Tier 2 and Stage II
 - D Tier 3 and Stage III A
 - E Interim Tier 4 and Stage III B
 - F Tier 4 Stage IV
 - G Interim Tier 4 and Stage III A (19-56 kW)
- 236673** **Machine Serial Number**



Thank you very much
for your reading.
Please click here
to get more information.