

318E, 319E, 320E, and 323E Skid Steer and Compact Track Loader (Manual Controls) Repair



REPAIR TECHNICAL MANUAL

IT4/S3A models 318E (PIN:1T0318E*G253889-), 319E (PIN: 1T0319E***G254929-), 320E (PIN: 1T0320E***G254913-), 323E (PIN: 1T0323E***G254917-)**

TM13012X19 12 NOV 14 (ENGLISH)

For complete service information also see:

319E and 323E Compact Track Loader (Manual Controls) Diagnostic	TM13086X19
318E and 320E Skid Steer Loader (Manual Controls) Diagnostic	TM13084X19
318E, 319E, 320E, and 323E Skid Steer and Compact Track Loader (EH Controls) Repair	TM13013X19
Yanmar 4TNV98 and 4TNV98T Diesel Engines (4/Stage IIB platform)	
120 Series Hydraulic Cylinders	



Table of contents

FOREWORD

MANUAL IDENTIFICATION—READ THIS FIRST!

Section 00 - GENERAL INFORMATION

Group 0001 - Safety

Group 0003 - Torque Values

Section 01 - WHEELS (OR) TRACKS

Group 0110 - Powered Wheels and Fastenings

Group 0130 - Track System

Section 02 - AXLES AND SUSPENSION SYSTEMS

Group 0201 - Drive Axle Housing and Support

Group 0250 - Axle Shaft, Bearings, and Reduction Gears

Section 03 - TRANSMISSION

Group 0315 - Controls Linkage

Group 0325 - Flywheel Coupler

Group 0360 - Hydraulic System

Section 04 - ENGINE

Group 0400 - Removal and Installation

Section 05 - ENGINE AUXILIARY SYSTEM

Group 0510 - Cooling Systems

Group 0520 - Intake System

Group 0530 - External Exhaust Systems

Group 0560 - External Fuel Supply Systems

Section 17 - FRAME OR SUPPORTING STRUCTURE

Group 1740 - Frame Installation

Section 18 - OPERATOR'S STATION

Group 1800 - Removal and Installation

Group 1810 - Operator Enclosure

Group 1821 - Seat and Seat Belt

Group 1830 - Heating and Air Conditioning

Section 19 - SHEET METAL AND STYLING

Group 1910 - Hood or Engine Enclosure

Section 20 - SAFETY AND CONVENIENCE

Group 2001 - Radio

Section 21 - MAIN HYDRAULIC SYSTEM

Group 2160 - Hydraulic System

Section 31 - LOADER

Group 3104 - Attachment Coupler

Group 3115 - Control Linkage

Group 3140 - Frame

Group 3160 - Hydraulic System

Section 99 - DEALER FABRICATED TOOLS

Group 9900 - Dealer Fabricated Tools

Foreword

This manual is written for an experienced technician. Essential tools required in performing certain service work are identified in this manual and are recommended for use.

Live with safety: Read the safety messages in the introduction of this manual and the cautions presented throughout the text of the manual.



CAUTION:

This is the safety-alert symbol. When you see this symbol on the machine or in this manual, be alert to the potential for personal injury.

Technical manuals are divided in two parts: repair and operation and tests. Repair sections tell how to repair the components. Operation and tests sections help you identify the majority of routine failures quickly.

Information is organized in groups for the various components requiring service instruction. At the beginning of each group are summary listings of all applicable essential tools, service equipment and tools, other materials needed to do the job, service parts kits, specifications, wear tolerances, and torque values.

Technical Manuals are concise guides for specific machines. They are on-the-job guides containing only the vital information needed for diagnosis, analysis, testing, and repair.

Fundamental service information is available from other sources covering basic theory of operation, fundamentals of troubleshooting, general maintenance, and basic type of failures and their causes.

Manual Identification—READ THIS FIRST!

IMPORTANT:

Use only supporting manuals designated for your specific machine. If incorrect manual is chosen, improper service may occur. Verify product identification number (PIN) when choosing the correct manual.

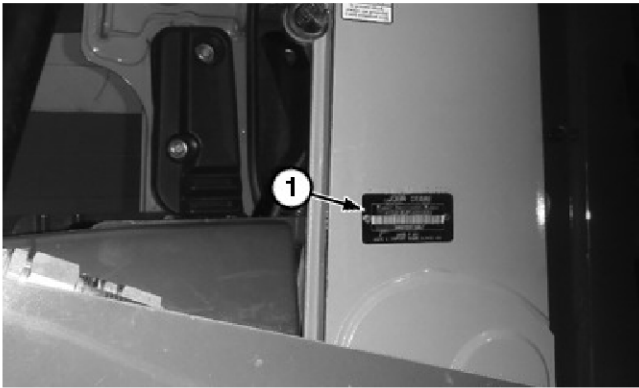
Choosing the Correct Supporting Manuals

John Deere skid steers are available in different machine configurations based on the various markets into which they are sold. Different supporting manuals exist for different machine configurations.

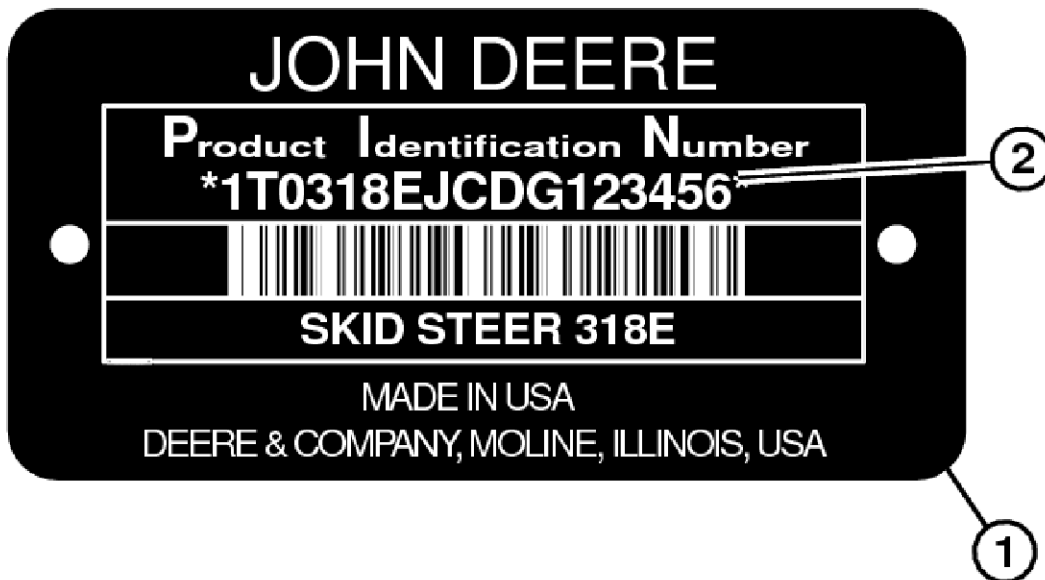
When necessary, product identification numbers (PINs) are listed on the front covers of skid steer manuals. These numbers are used to identify the correct supporting manual for your machine.

For more information see Engine Identification. (Section 3-2.)

Product Serial Number Identification



PIN Plate Location



Example of PIN Plate

LEGEND:

- 1 PIN Plate
- 2 17-Character PIN

The product identification number (PIN) plate (1) is located on the right side of machine above the boom lock. Each machine has a 17-character PIN (2) shown on PIN plate.



Thank you very much
for your reading.
Please click here
to get more information.